

We are a multidisciplinary clinic that offers concussion assessments, management and a referral network allowing us to manage even the most complicated concussion. We offer same day appointments and access to a practitioner 24 hours a day as a patient. We know how scary having a concussion can be so we set you up with a team practitioner to help you through the tough times and to answer questions. We will also provide your family physician or nurse practitioner with the information we collect in the assessment and from your progress. We will assist you with any accommodations you may need at work or school and guide you through in home changes as well. This is a full program for athletes, motor vehicle accidents, slip and falls, etc.

Day	Hours
Monday	9:00-6:00pm
Tuesday	9:00-6:00pm
Wednesday	2:00-6:00pm
Thursday	9:00-6:00pm
Friday	9:00-1:00pm
Saturday	Closed
Sunday	Closed

We offer Impact testing both for baseline and post injury. We also manage concussions through an array of protocols including visual components, cervical treatments, counselling, and referrals to other practitioners such as dentists, optometrists, psychologists etc.

ACTIVE THERAPY +

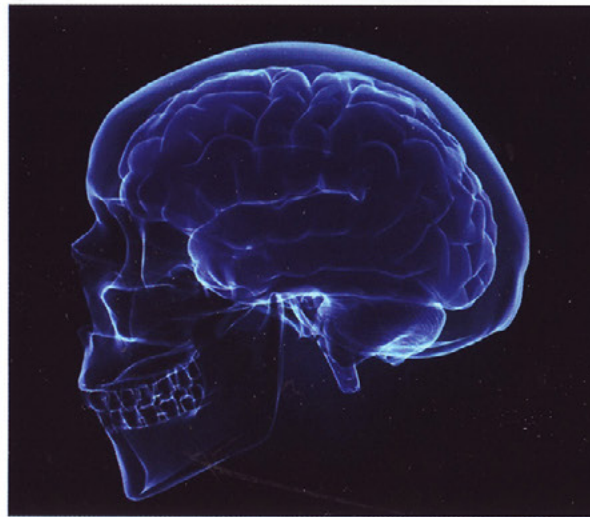
797 LORNE ST
SUDBURY, ONT
705-674-2222
Kim@atrc.ca

HEAD FIRST CONCUSSION MANAGEMENT

**ACTIVE THERAPY +
705-674-2222**

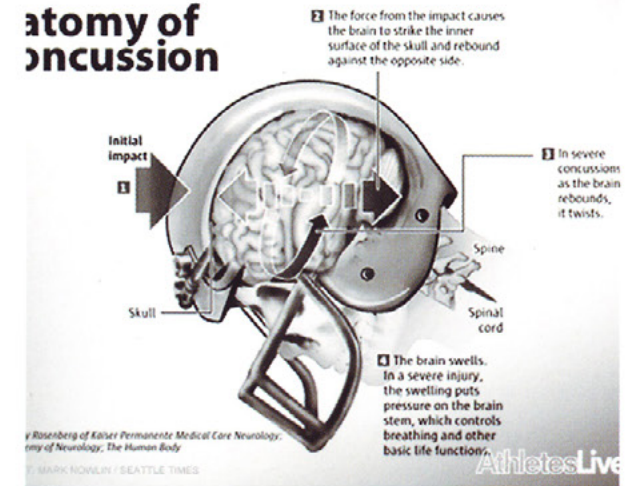


Neurocognitive Testing
This is an evaluation of one's cognitive status pre or post concussion. We use a test called ImPact which is an online computer test involving simple questions that monitor reaction time, memory, attention, problem solving etc. It also allows us to ask symptoms pre and post test to see if screen work or thinking influences those symptoms.



Vestibular, Ocular Motor Screening
Vestibular and ocular motor impairments have been seen in people with concussions. VOMS assesses five areas of the vestibular and ocular systems: smooth pursuits, saccades, vestibular ocular reflex, visual motion sensitivity and near-point-convergence. We use this information to both diagnose and to prepare a management program to assist in recovery.

anatomy of concussion



Baseline Testing
We offer baseline testing prior to a concussion for individuals and for teams. The purpose of a baseline test is to measure multiple areas of brain function that are commonly affected following a concussion. This information can be used to determine when they are back to baseline and assists us with the return to play/school/work decision.